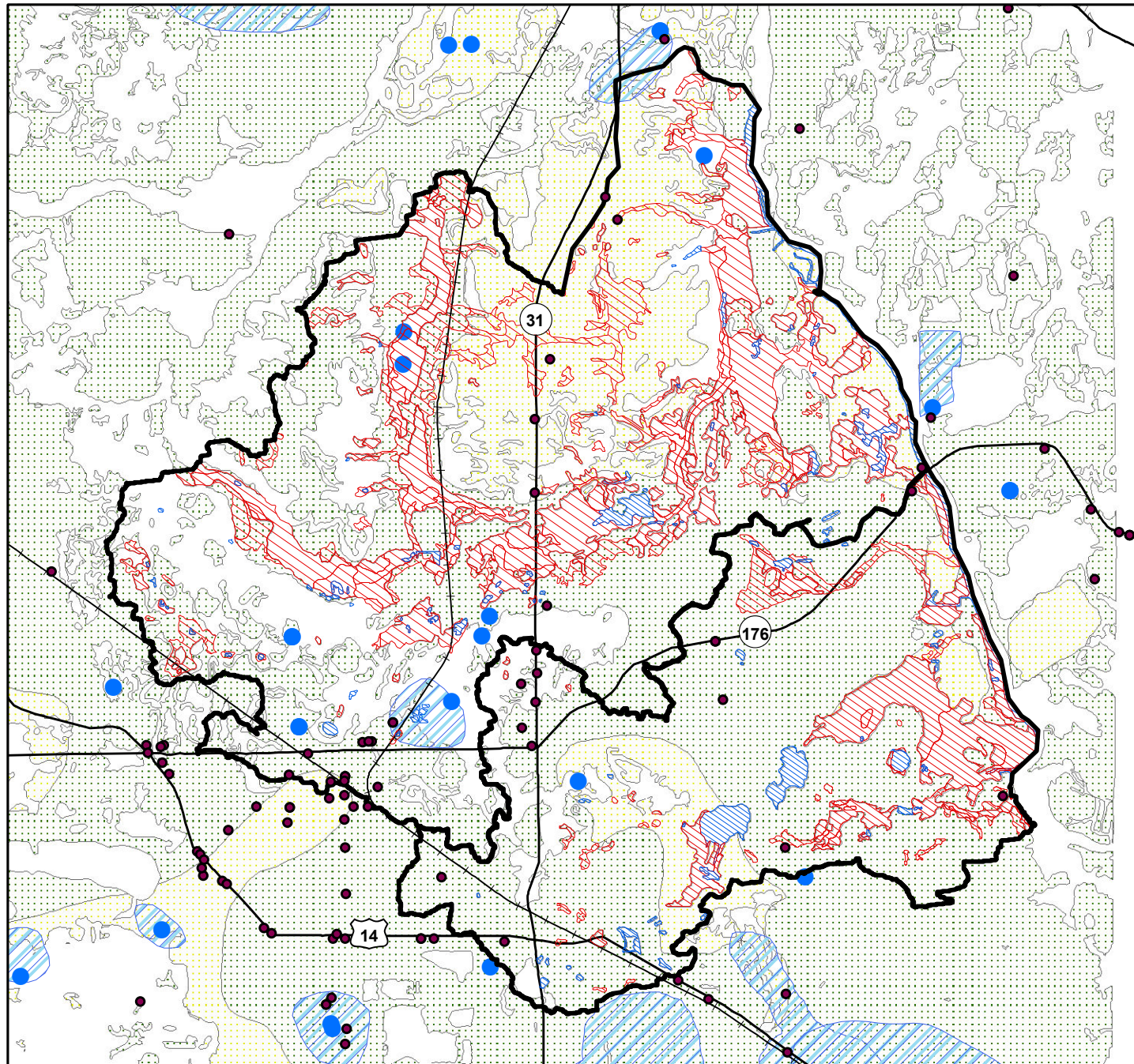


Sensitive Aquifer Recharge Areas, Shallow CWS Wells, & Hydric Soils in the Sleepy Hollow & Silver Creek Watershed Planning Area



Legend

- Watershed Png Area_SH
- Watershed Png Area_SC

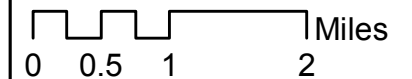
Sensitive Aquifer Recharge Areas

- High Potential for aquifer contamination
- Mod. High Potential for aquifer contam.

- Shallow Wells
- Ph 2 Wellhead Protection Areas, 2010
- LUST sites

Hydric Soils (clipped)

- unknown
- Not hydric
- Hydric



Data Sources: Sensitive Aquifer Rechg Areas - McHenry Co. Div. Water Resources; Wells (active in 2005) - ISWS; Ph 2 WHPAs - IEPA; LUST sites - IEPA; Hydric soils - NRCS; Watershed Planning Areas (draft) - CMAP & ISWS

Map Date: Feb. 8, 2011 - ME; rev. Mar. 14, 2011 - HH



Chicago Metropolitan Agency for Planning