



Chicago Metropolitan
Agency for Planning

Ferson-Otter Creek Watershed Meeting

November 23, 2010

2:00-4:00 p.m.

Amy Talbot, Associate Planner

Overview

- Streamwalk
- Future Land Use Vision
- Resource Inventory

Streamwalk-11/18/10

- **South Elgin, Jim Reuter** (Parks and Recreation Dept.)
 - Thornwood and Otter Creek Wetland
 - Otter Creek at the end of Reserve Court
- **St. Charles, Ken Anderson** (Manager of the Subdivision & Special Project Division at Kane County)
 - Otter Creek Bend Wetland Park
 - Dam modification project in the LeRoy Oakes Forest Preserve.









Who Lives at Otter Creek Bend Wetland?



- Wetland Web**
- 1. American Cooton
 - 2. American Goldeneye
 - 3. American Osprey
 - 4. American Redstart
 - 5. American Robin
 - 6. American Woodcock
 - 7. Canada Goose
 - 8. Canada Jay
 - 9. Canada Sparrowhawk
 - 10. Canada Warbler
 - 11. Canada Wren
 - 12. Canada Yellowthroat
 - 13. Canada Yellowlegs
 - 14. Canada Kingbird
 - 15. Canada Kingfisher
 - 16. Canada Kinglet
 - 17. Canada Kingfisher
 - 18. Canada Kinglet
 - 19. Canada Kingfisher
 - 20. Canada Kinglet

© 2000 Otter Creek Bend Wetland Association







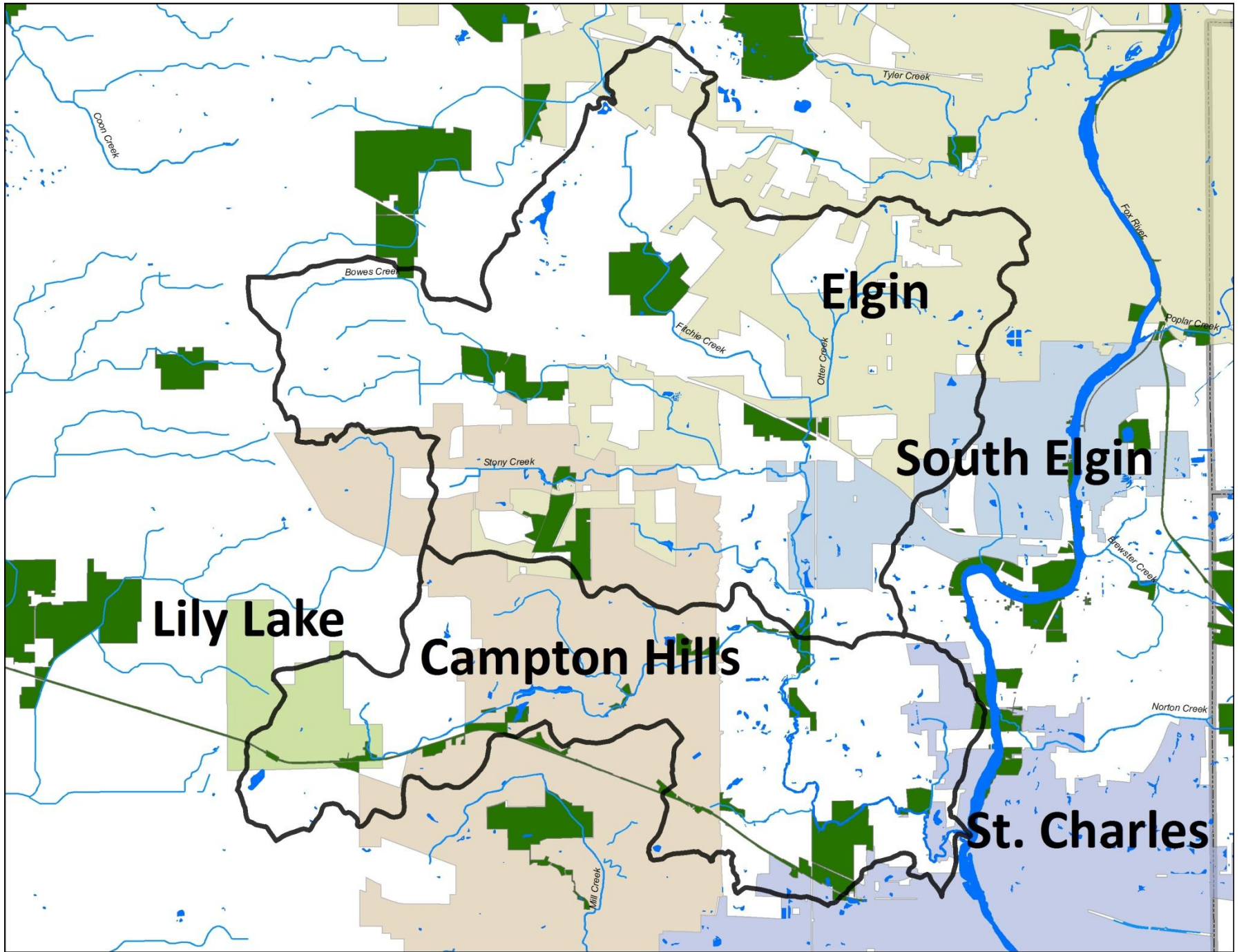


Thoughts and Questions

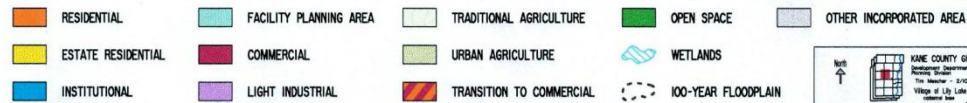
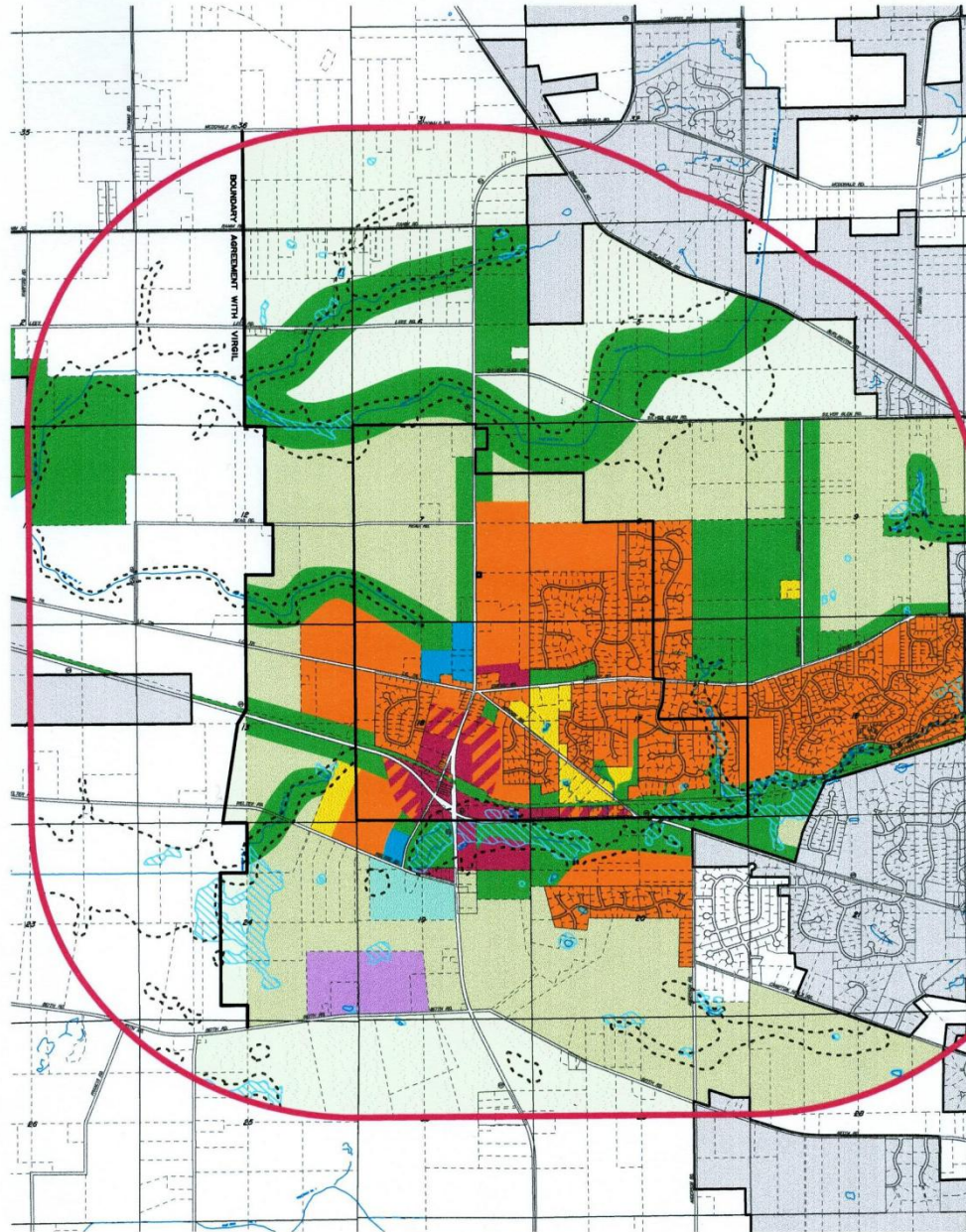


Future Land Use Vision

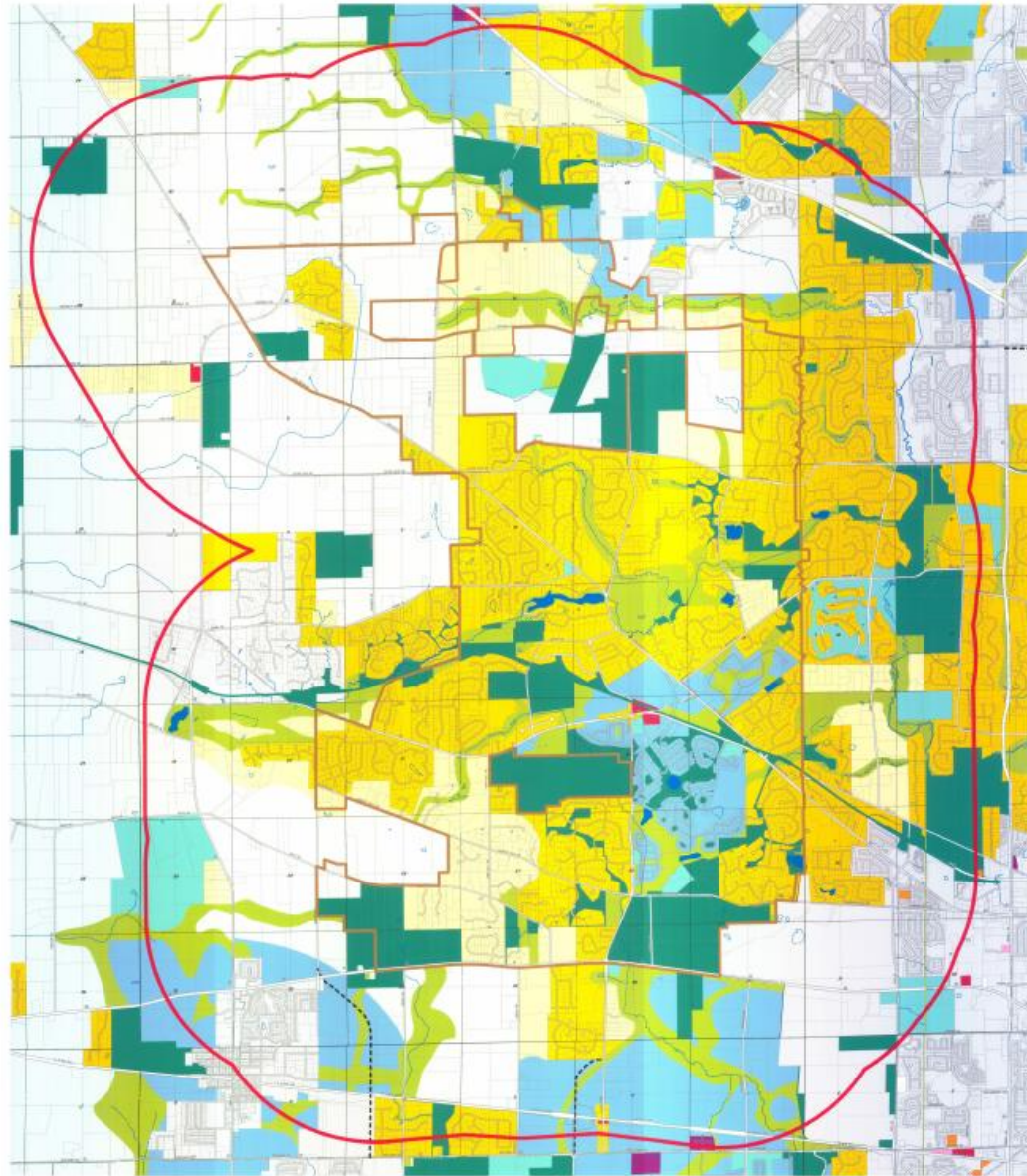
- What?
 - Combination of all municipal future land use plans
- Why?
 - Provide input for model to calculate future pollutant load
 - Idea of what future land use will be
 - Fulfills a regional criteria for plan
- How?
 - Take individual maps and “stitch” them together in GIS



VILLAGE OF LILY LAKE COMPREHENSIVE LAND USE PLAN



VILLAGE OF CAMPTON HILLS COMPREHENSIVE PLAN MAP



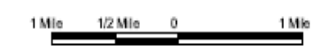
- | | | |
|--|--|---|
|  Existing Open Space |  Countryside/Estate Residential |  Office/Research |
|  Institutional/Private Open Space |  Rural Residential |  Indust., Lt. Indust., Warehousing |
|  Proposed Open Space |  Resource Management |  Water |
|  Agriculture |  Urban Residential |  Municipality |
|  Agricultural Business |  Commercial |  Transportation Improvement |



Figure 3.4
Land Use Plan

Map Legend

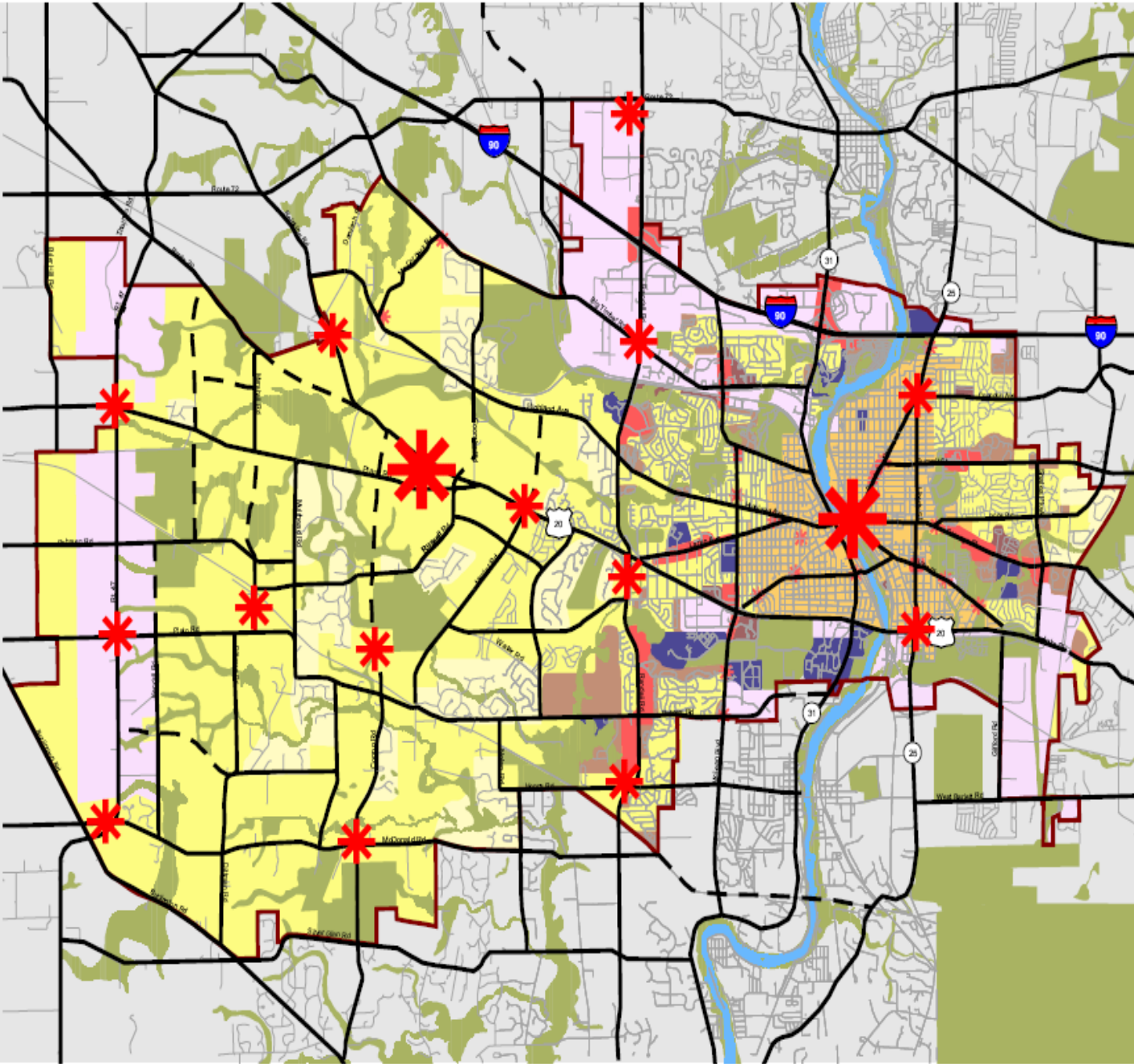
- RESIDENTIAL**
- Estate Residential (0-2 d.u./net acre)
 - Low Density Residential (2.1-4 d.u./net acre)
 - Urban/Traditional (2.1-8.7 d.u./net acre)
 - Medium Density Residential (4.1-8.7 d.u./net acre)
 - High Density Residential (8.8+ d.u./net acre)
- COMMERCIAL/MIXED-USE**
- * Neighborhood Mixed-Use
 - * Community Mixed-Use
 - Highway Commercial
- EMPLOYMENT**
- Office/Research/Industrial
- INSTITUTIONAL**
- Civic, Schools (Secondary & Higher) & Hospitals
- PARKS & OPEN SPACE**
- Parks, Cemeteries, Forest Preserves, Floodplain
- TRANSPORTATION CORRIDORS**
- Existing Corridors
 - Proposed Corridors

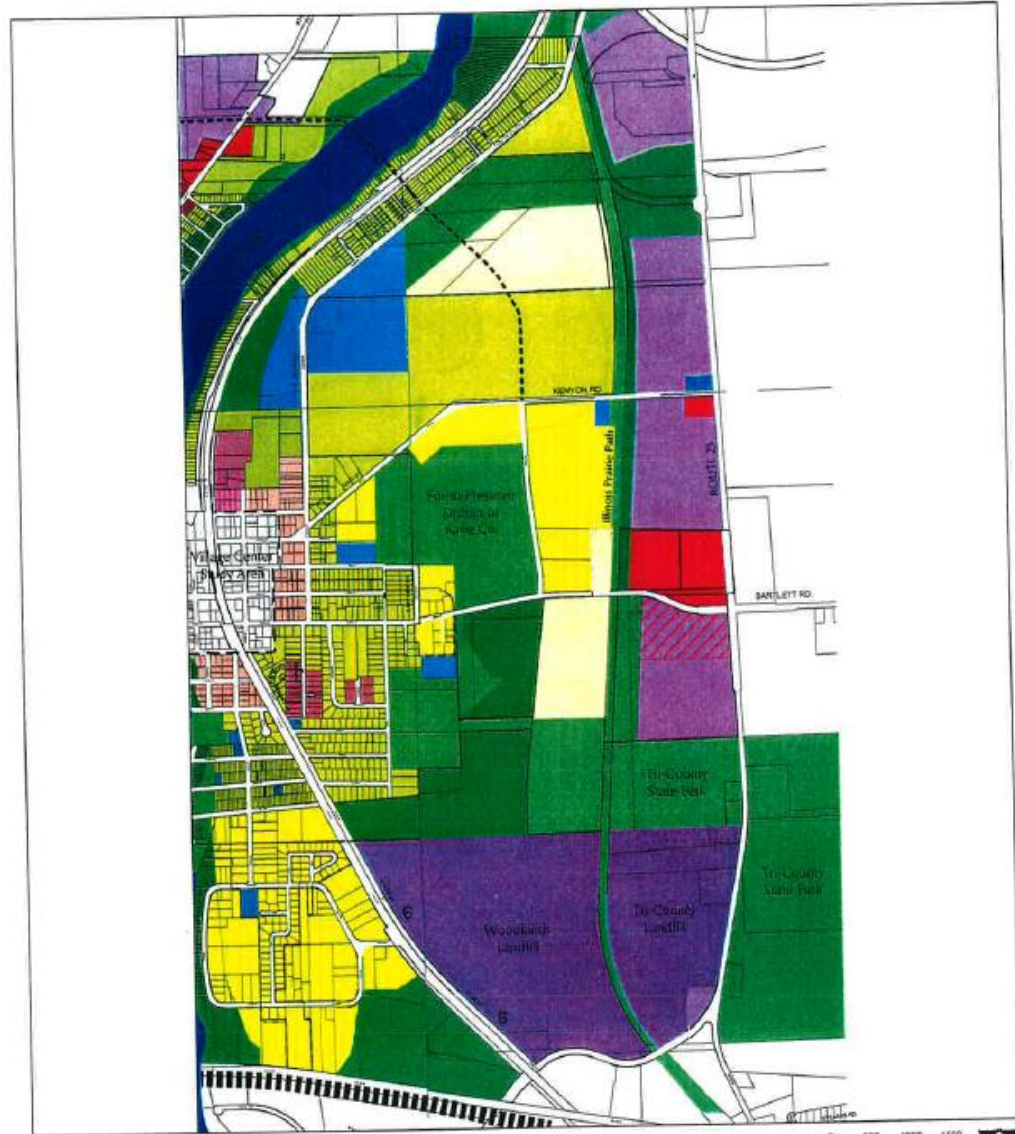


City of Elgin
Comprehensive Plan
and Design Guidelines



City of Elgin
Community Development Group





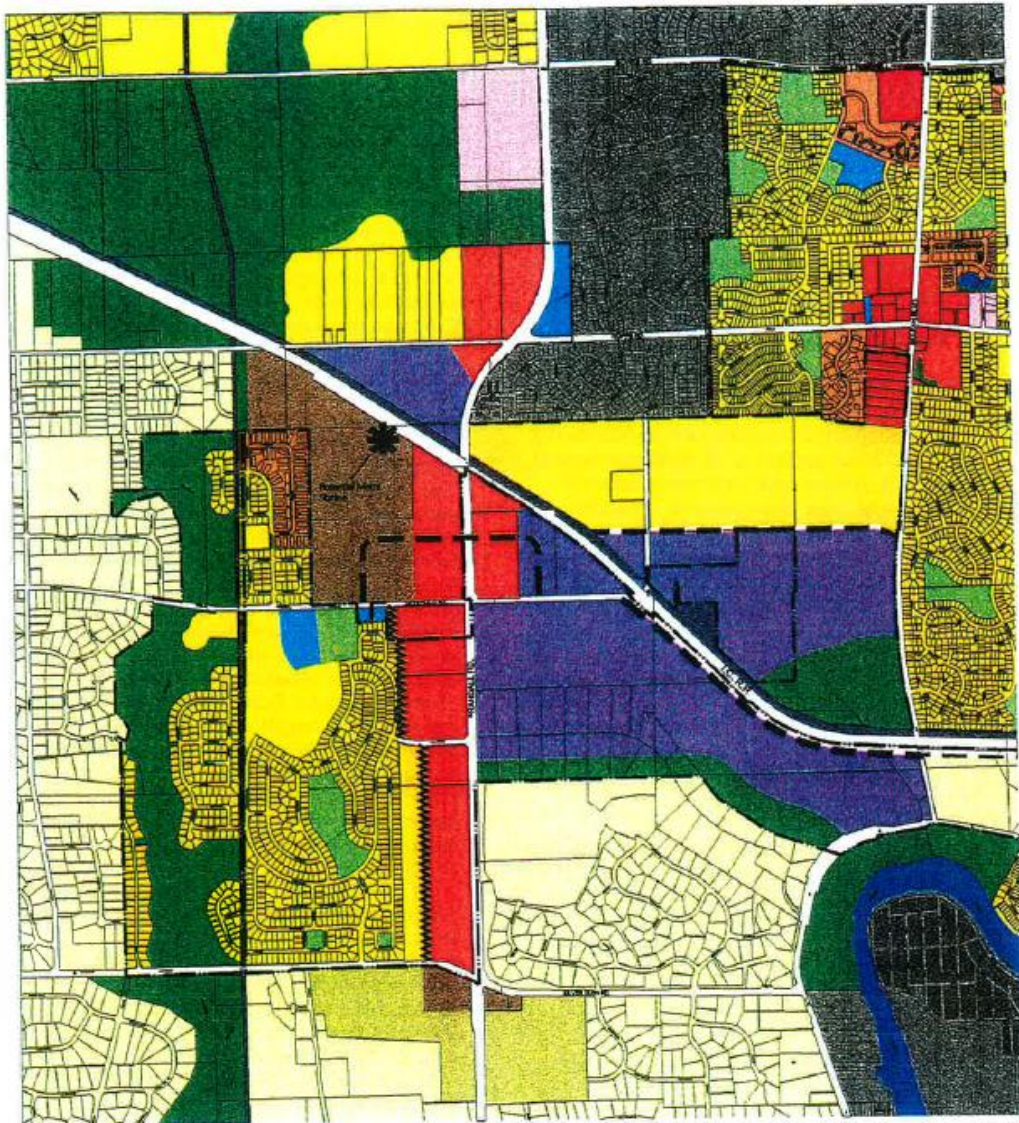
Legend

- | | | |
|---------------------------------------|----------------------------|----------------------------|
| Rural/Estate Residential | Master Planned Development | Industrial Business Park |
| Single-Family Res. (Low Density) | Park/ Recreation | Landfill |
| Single-Family Res. (Moderate Density) | Conservation/ Open Space | Future Roads |
| Multiple-Family Residential | Retail Commercial | Transitional Buffer |
| Village Center Residential | Institutional | S. Elgin Municipal Boundry |

25 acres

EASTERN GROWTH AREA
FUTURE LAND USE PLAN
 VILLAGE OF SOUTH ELGIN COMPREHENSIVE PLAN

TESKA
 ASSOCIATES
 INC.

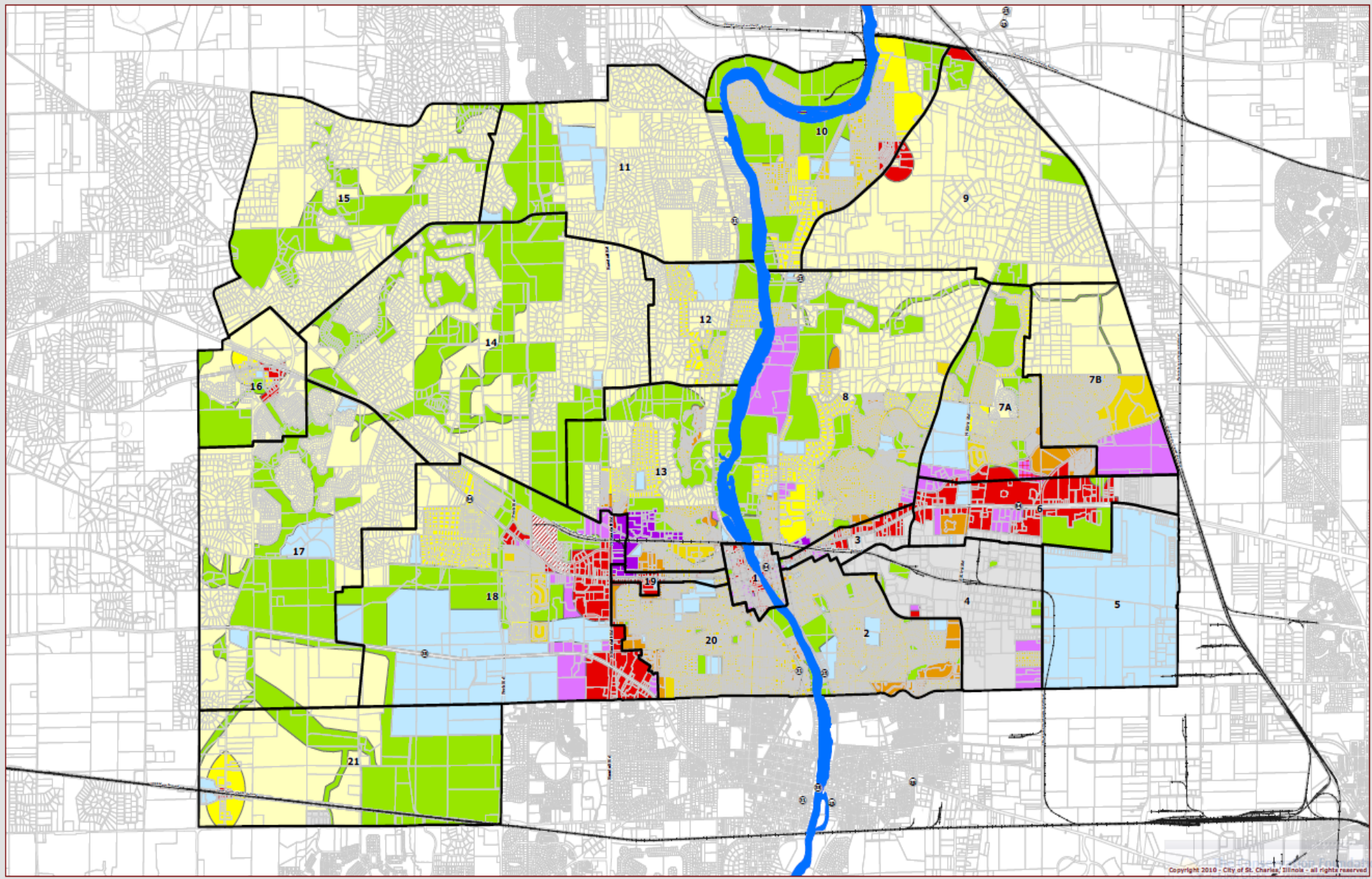


Legend

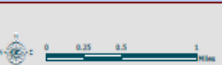
- | | | | |
|-----------------------------|--------------------------|--------------------------|--------------------------|
| Rural/Estate Residential | Office | Conservation/ Open Space | S. Elgin Municipal Bndry |
| Single-Family Residential | Mixed-Use Planned Dev. | Utility | Elgin Municipal Bndry |
| Multiple-Family Residential | Industrial Business Park | Future Roads | |
| Residential Planned Dev. | Institutional | Transitional Buffer | |
| Commercial | Park/ Recreation | | |

WESTERN GROWTH AREA
FUTURE LAND USE PLAN
 VILLAGE OF SOUTH ELGIN COMPREHENSIVE PLAN

TESKA
 ASSOCIATES
 INC.



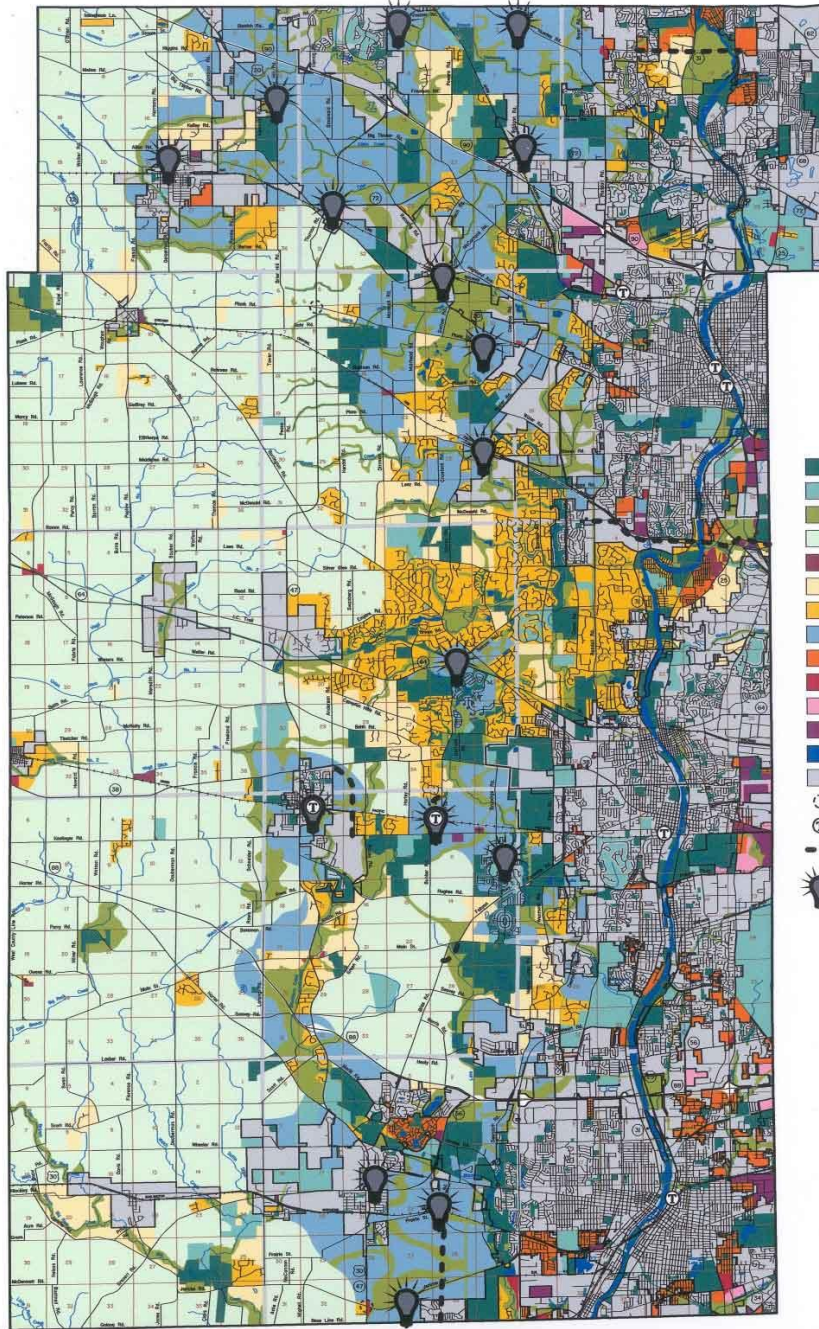
Copyright 2010 - City of St. Charles, Illinois - all rights reserved.



	Residential		Public and Semi-Public		Financing Component
	Low Residential		Retail and Service		Business/Industrial
	Medium Residential		Municipality		Retail & Service/Office Research
	Urban Residential		Special Municipality		Open Space
	Office and Research				

<http://ca>
This map was created for planning purposes only and is intended as a general reference of use. The boundaries may change frequently and without notice. The City of St. Charles, Illinois, under United States copyright protection and may not be reproduced or otherwise used in any form without the express written permission of the City of St. Charles, Illinois. All rights reserved. © 2010.

2030 LAND USE



- Existing Open Space
- Institutional/Private Open Space
- Proposed Open Space
- Agriculture
- Agricultural Business
- Countryside/Estate Residential
- Rural Residential
- Resource Management Area
- Urban Residential
- Commercial
- Office/Research
- Indust., Lt. Indust., Warehousing
- Water
- Municipality
- Crossroad Commercial
- Ⓣ Transit
- Transportation Improvement
- ☀ Priority Place

North
↑

- Existing Open Space
- Institutional/Private Open Space
- Proposed Open Space
- Agriculture
- Agricultural Business
- Countryside/Estate Residential
- Rural Residential
- Resource Management Area
- Urban Residential
- Commercial
- Office/Research
- Indust., U.L. Indust., Warehousing
- Water
- Municipality
- General Commercial
- Terrace
- Interpretation Interpretation
- Nearby Place

Map Legend

RESIDENTIAL

- Single Residential (3.0-4.0 net acre)
- Low Density Residential (2.1-4.0 net acre)
- Urban/Traditional (2.1-9.7 net acre)
- Medium Density Residential (4.1-10.7 net acre)
- High Density Residential (8.8-14.2 net acre)

COMMERCIAL/MIXED-USE

- Neighborhood Mixed Use
- Community Mixed Use
- Highway Commercial

EMPLOYMENT

- Office-Research/Industries
- Civic, Schools (Secondary & Higher) & Hospitals

INSTITUTIONAL

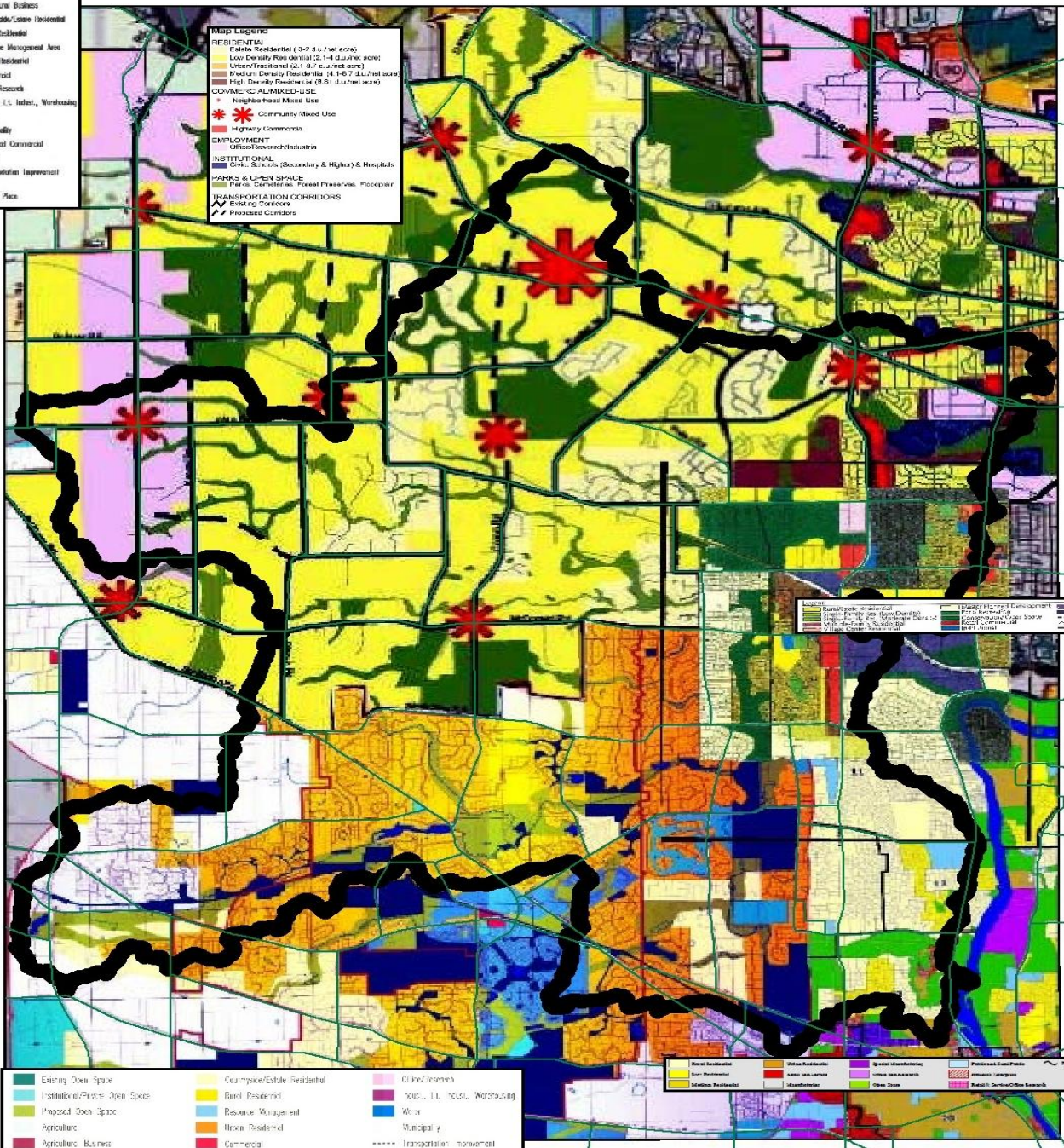
- Parks, Schools, Recreational Facilities, Mosques, etc.

PARKS & OPEN SPACE

- Parks, Open Space, Forest Preserves, etc.

TRANSPORTATION CORRIDORS

- Existing Corridors
- Proposed Corridors

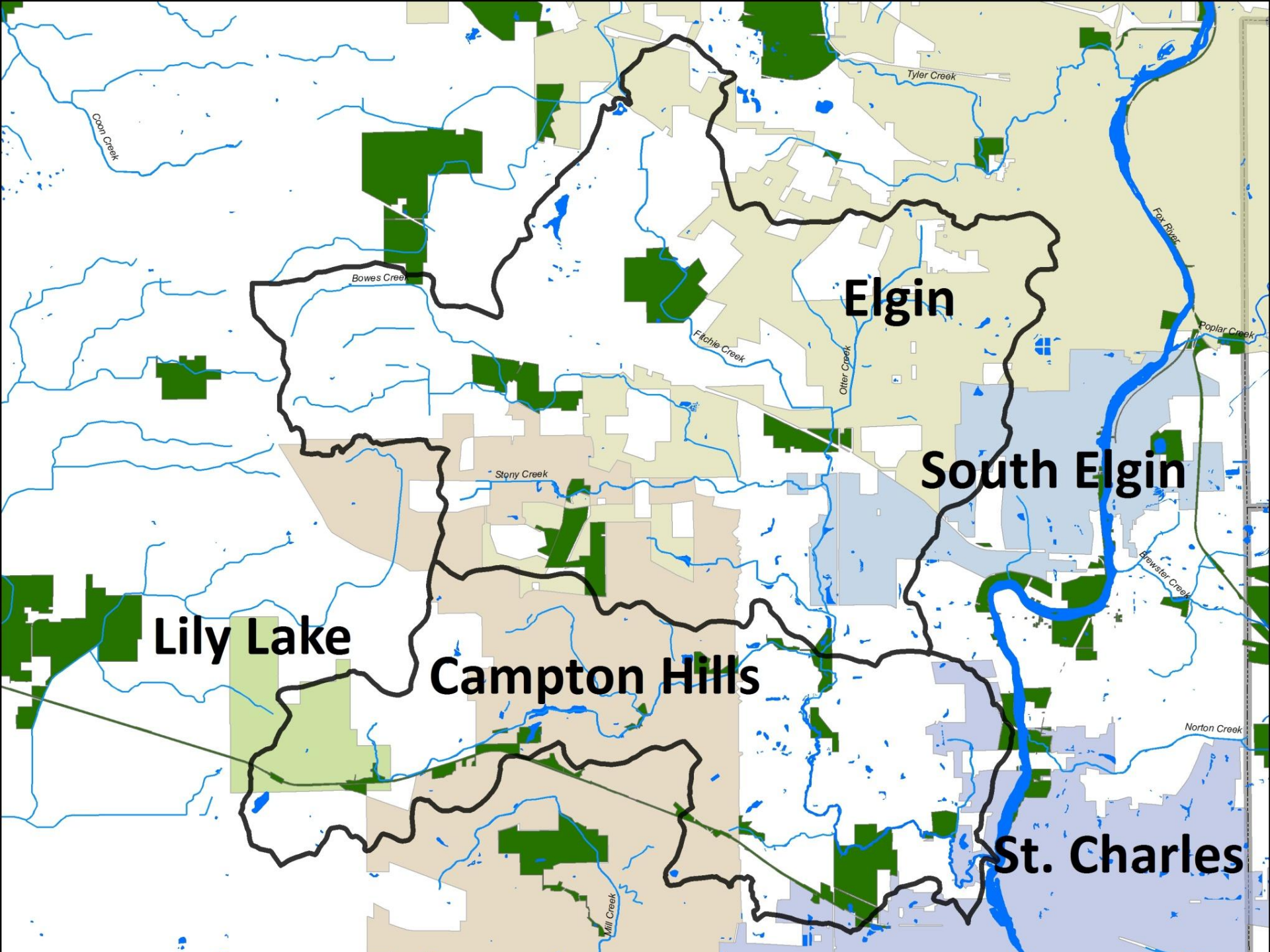


Scale: 1 inch = 1 mile

North Arrow

- Existing Open Space
- Institutional/Private Open Space
- Proposed Open Space
- Agriculture
- Agricultural Business
- Countryside/Estate Residential
- Rural Residential
- Resource Management
- Urban Residential
- Commercial
- Office/Research
- Indust., U.L. Indust., Warehousing
- Water
- Municipality
- Transportation Corridor

- Single Residential
- Low Residential
- Medium Residential
- High Residential
- Office-Research/Industries
- Neighborhood Mixed Use
- Community Mixed Use
- Highway Commercial
- Parks, Schools, Recreational Facilities, Mosques, etc.
- Parks, Open Space, Forest Preserves, etc.
- General Commercial
- Interpretation Interpretation
- Nearby Place



Elgin

South Elgin

Lily Lake

Campton Hills

St. Charles

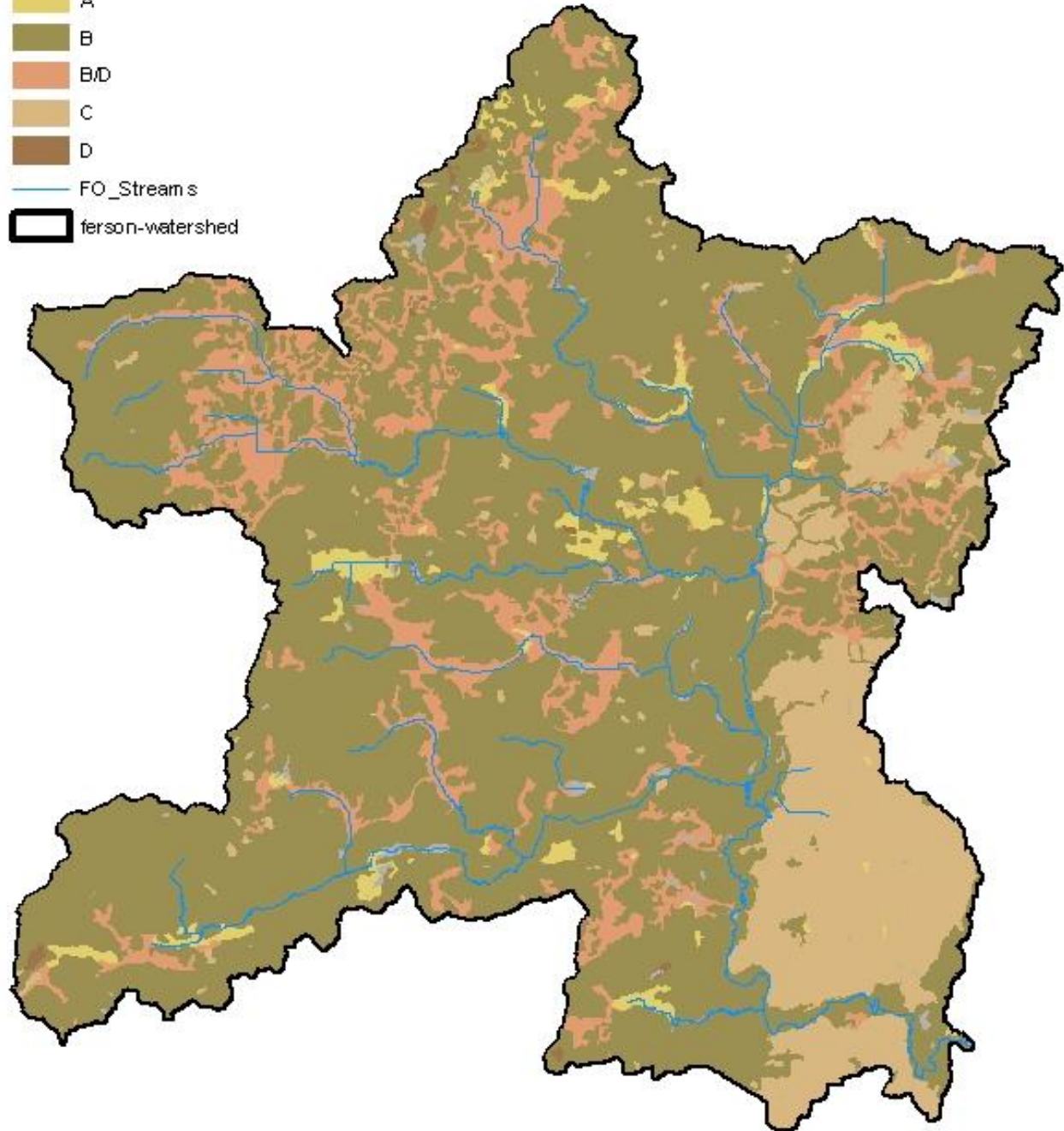
Thoughts and Questions



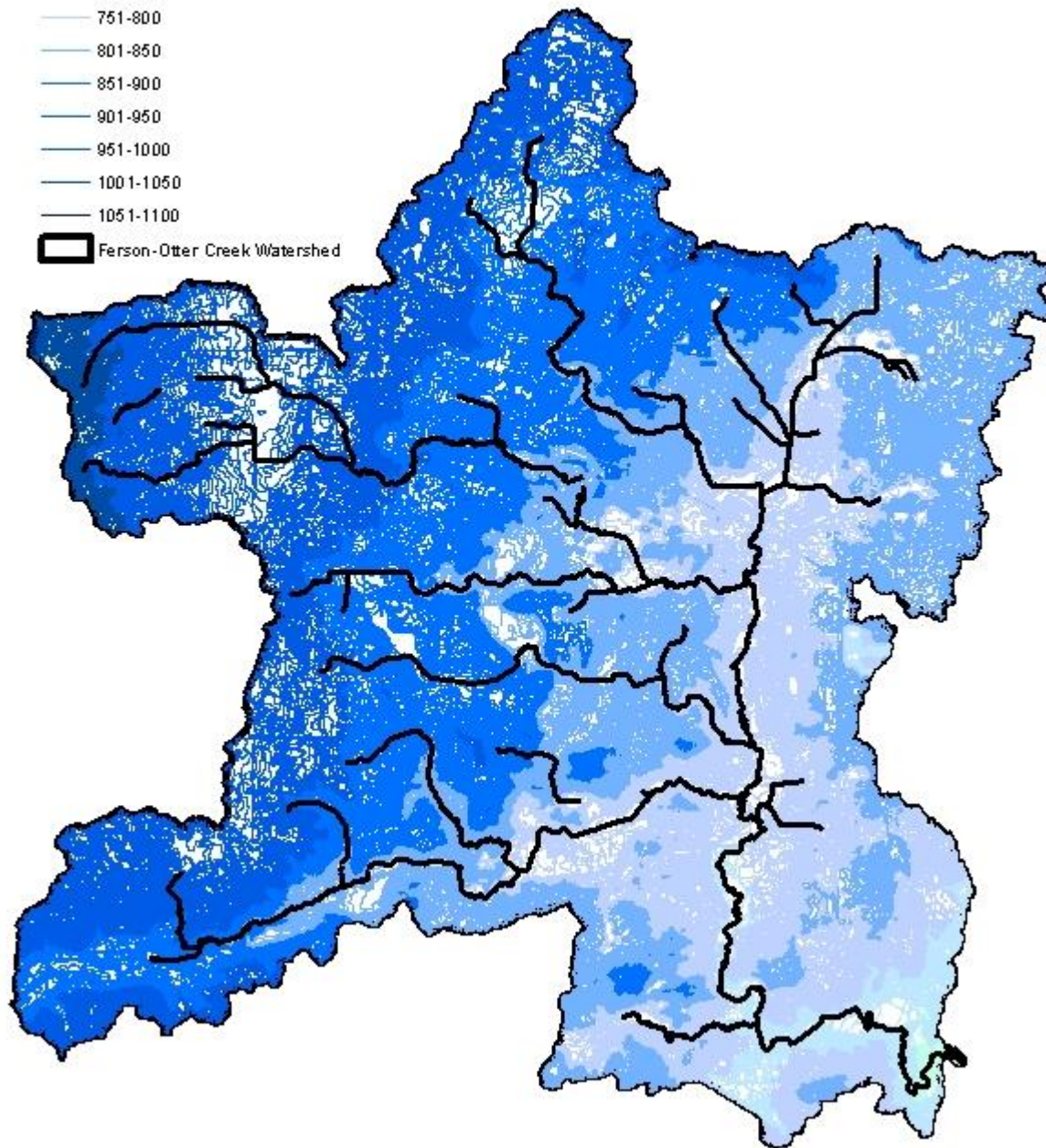
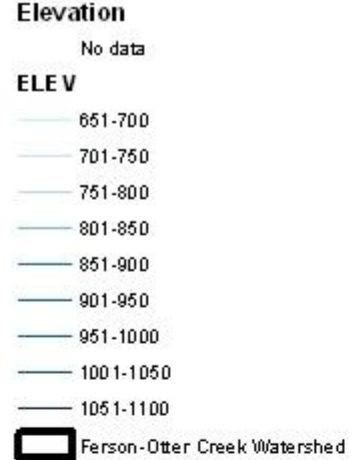
Resource Inventory

- Baseline for analysis
- Data
 - Physical conditions
 - Natural areas
 - Structures
 - Sampling locations
 - Other relevant studies
- What are we missing? Where do we get it?

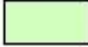

SSURGO Soil Data



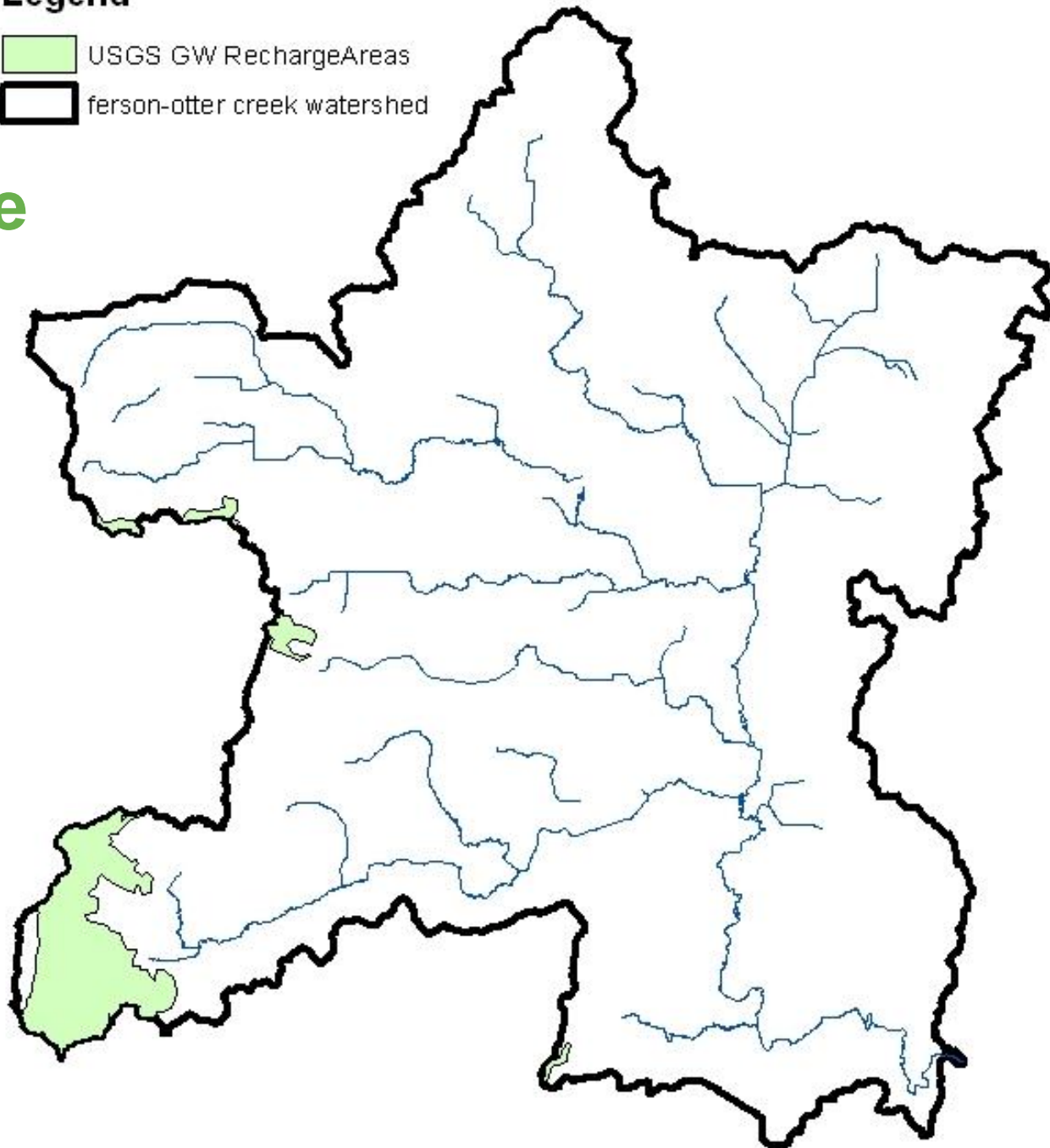
Elevation



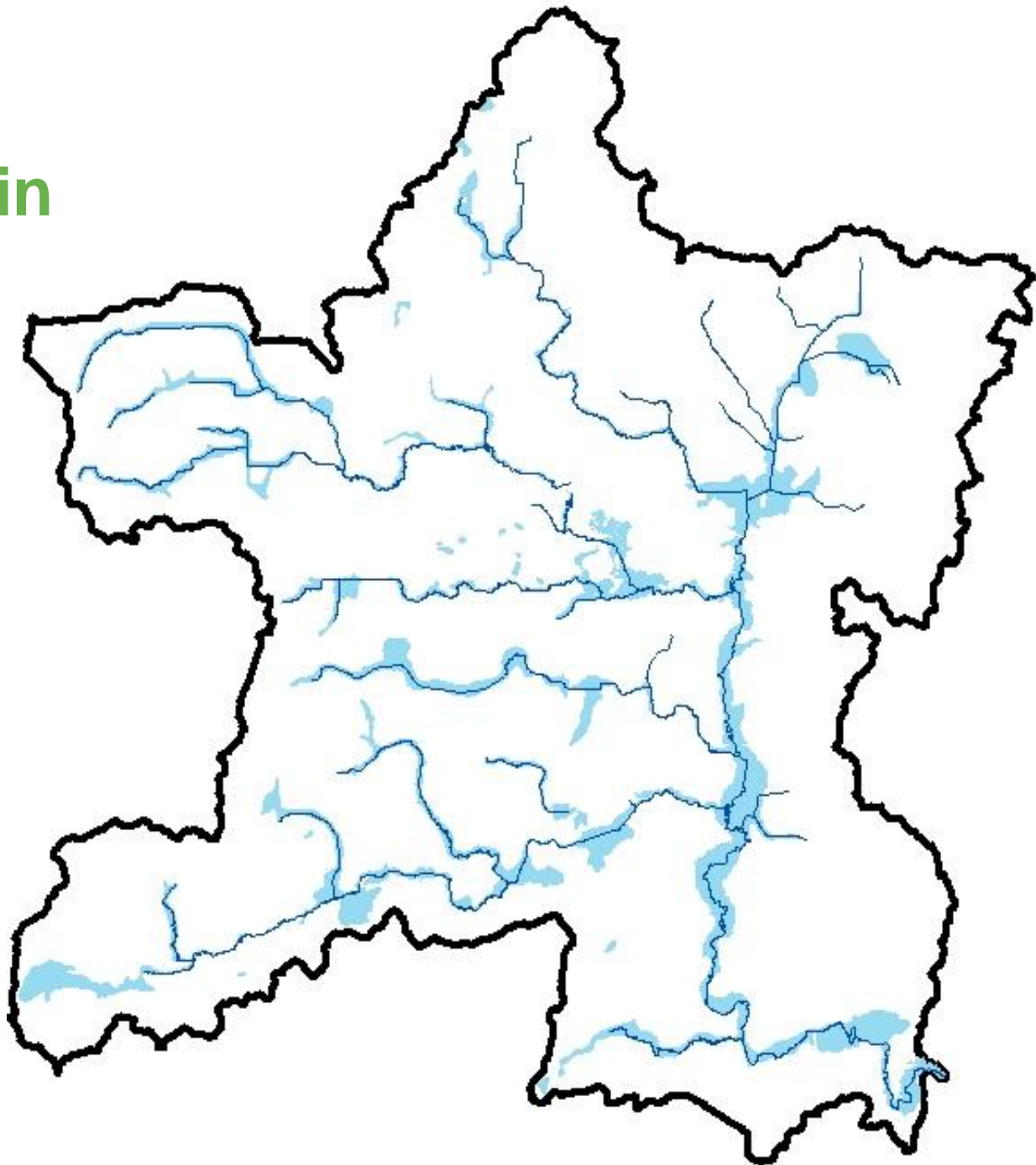
Legend

-  USGS GW RechargeAreas
-  ferson-otter creek watershed

Recharge Areas



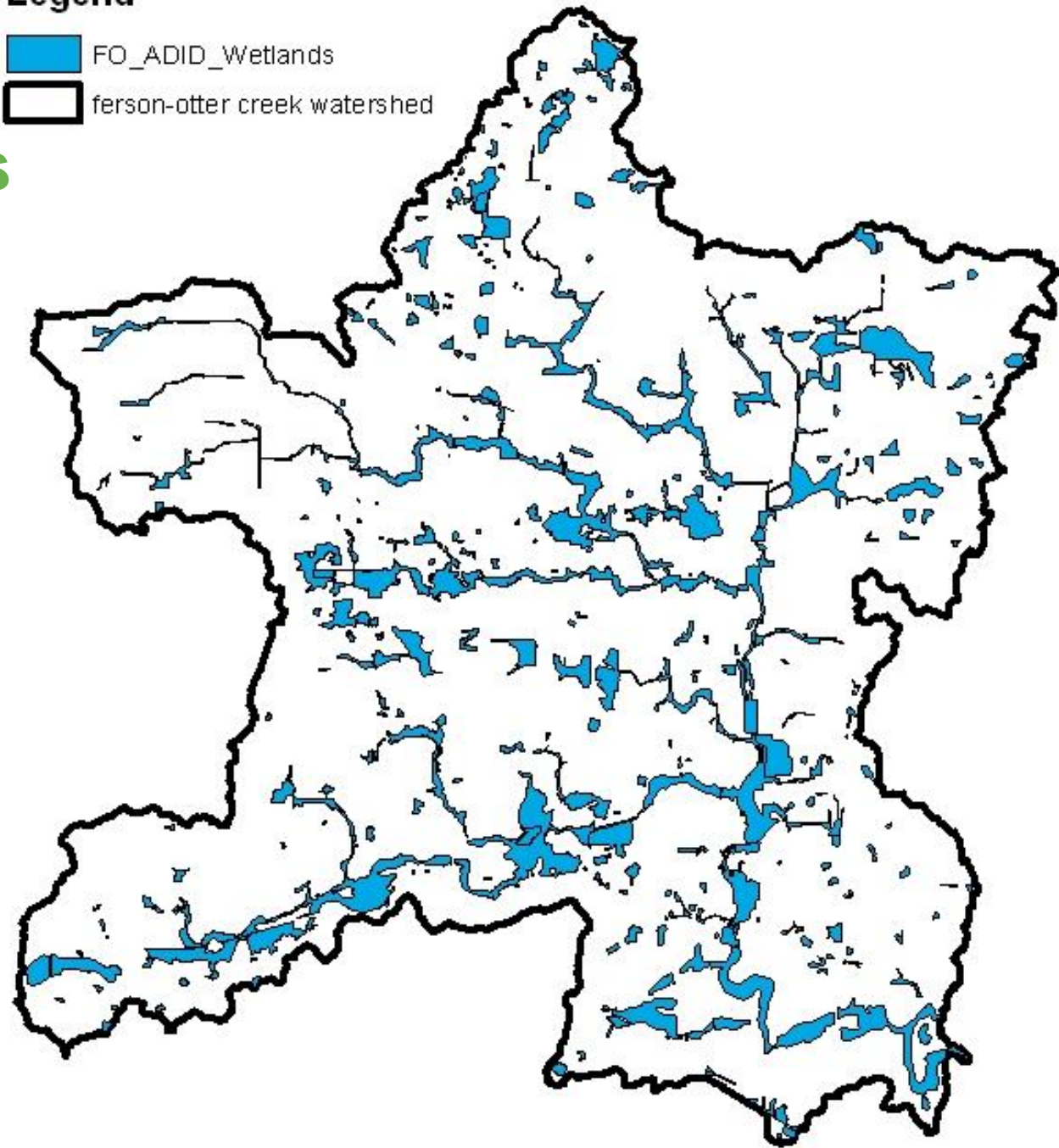
FEMA- Floodplain





ADID- Wetlands

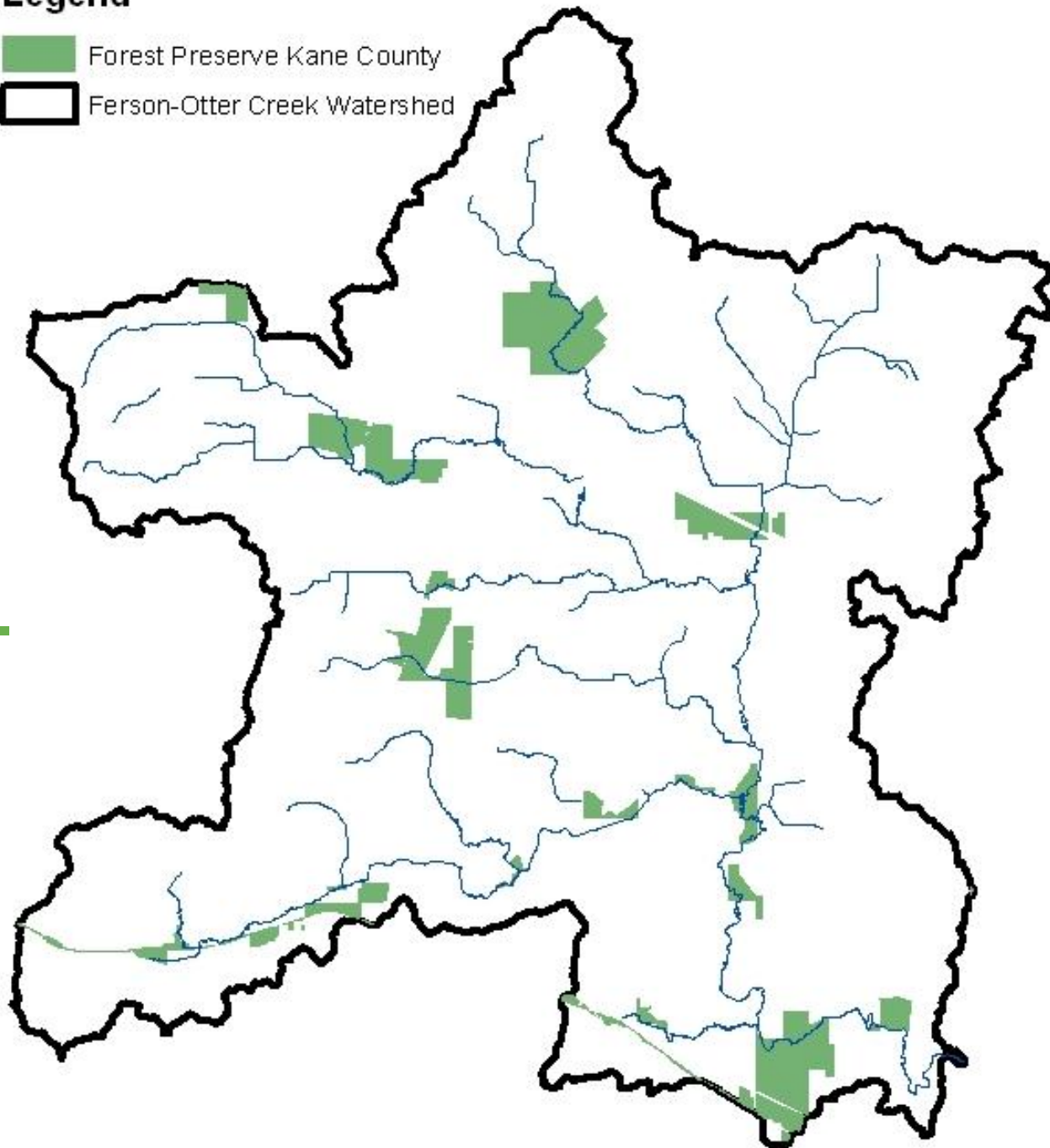
Legend

- FO_ADID_Wetlands
- fernon-otter creek watershed



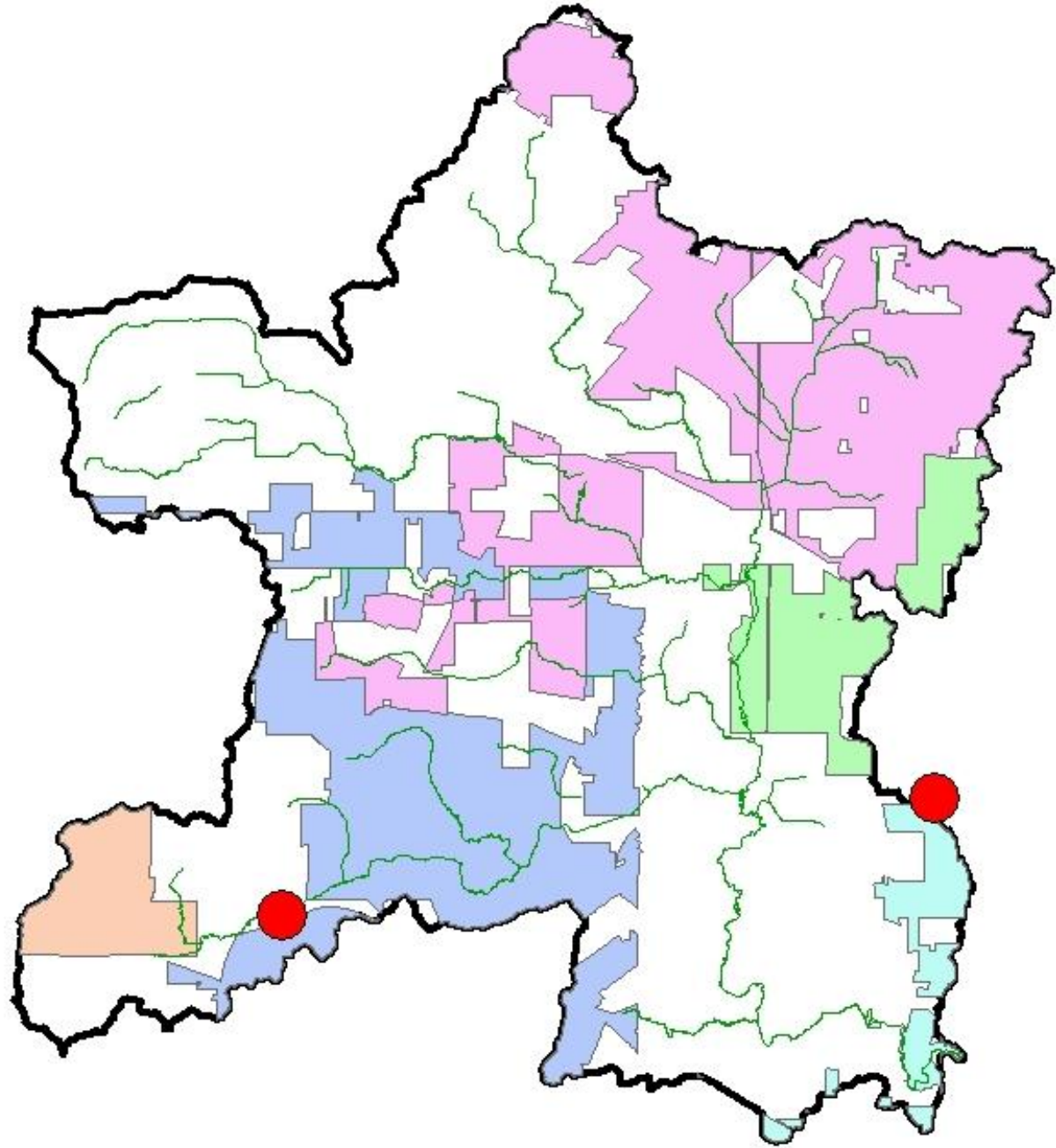
Legend

-  Forest Preserve Kane County
-  Ferson-Otter Creek Watershed

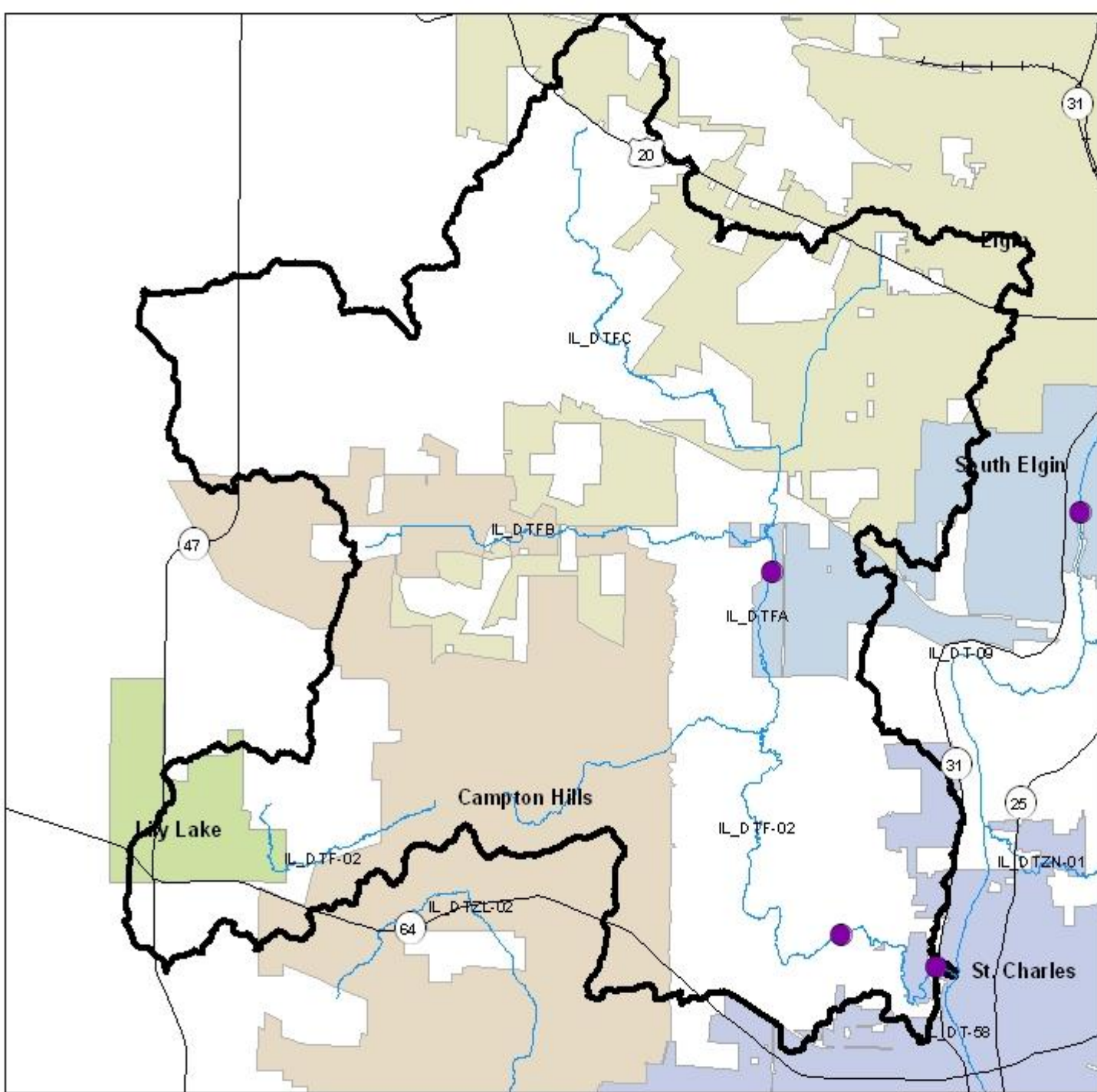


Forest
Preserve-
Kane
County

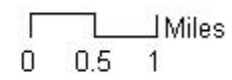
NPDES Permit data



Ferson - Otter Creek Watershed Sampling Locations and Stream Segments



- Sampling Locations
- IEPA Stream Segments
- Campton Hills
- Elgin
- Lily Lake
- South Elgin
- St. Charles

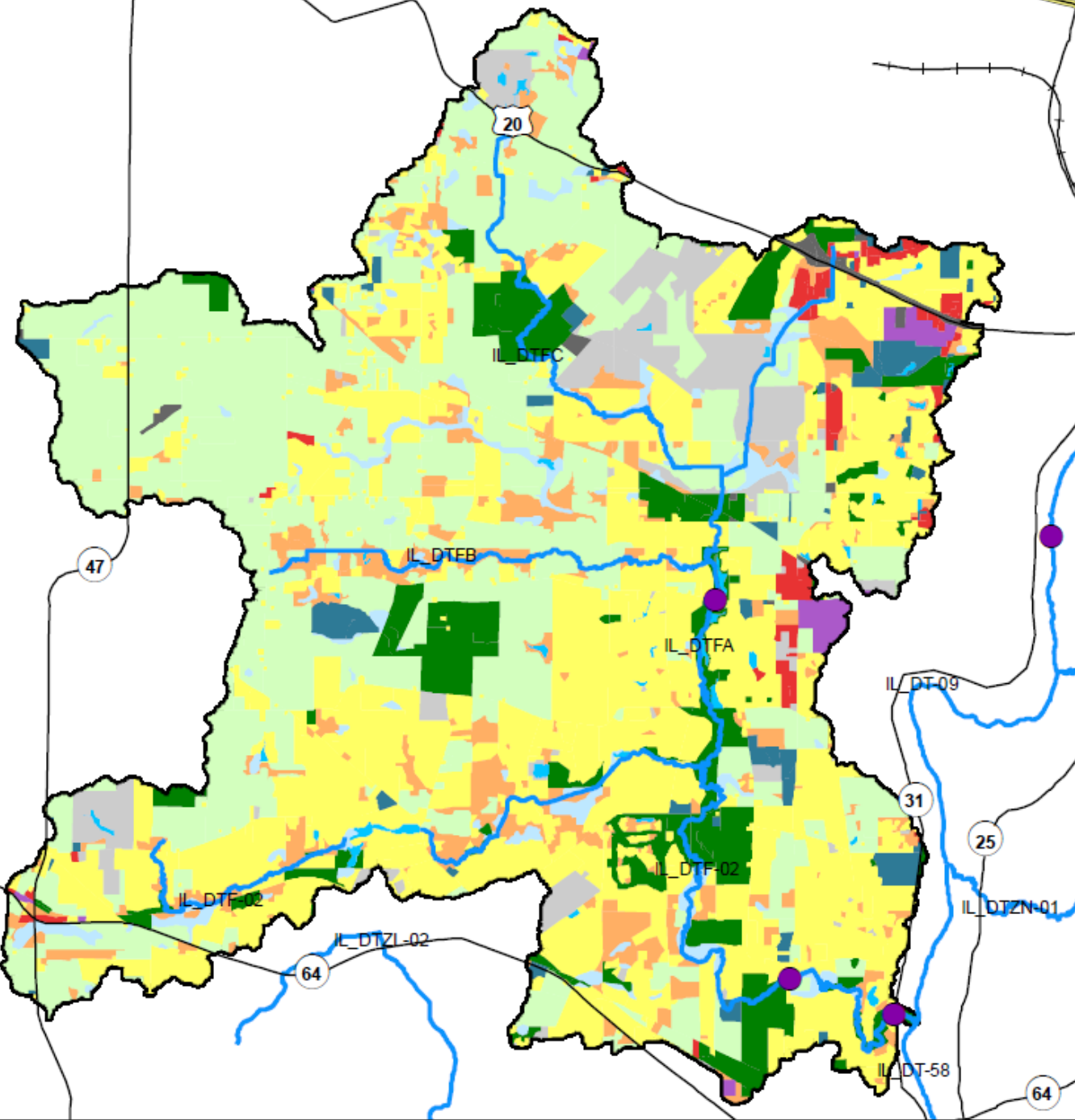


Data Sources: Watershed Boundaries: Illinois State Water Survey; Municipal Boundaries: CMAP; Roads: NAVTEQ and CMAP; Metra Rail Lines: RTA; U.S. Major Highways: Shapefile: ESRI; Sampling Locations and Stream Segments: IEPA.



Chicago Metropolitan Agency for Planning

Ferson - Otter Creek Watershed Sampling Locations and Stream Segments

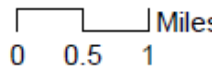


- Sampling Locations
- IEPA Stream Segments

Land Use (2005)

- Residential
- Commercial
- Institutional
- Industrial
- Trans./Comm./Util.
- Under Construction
- Agriculture
- Open Space
- Vacant
- Wetland
- Water

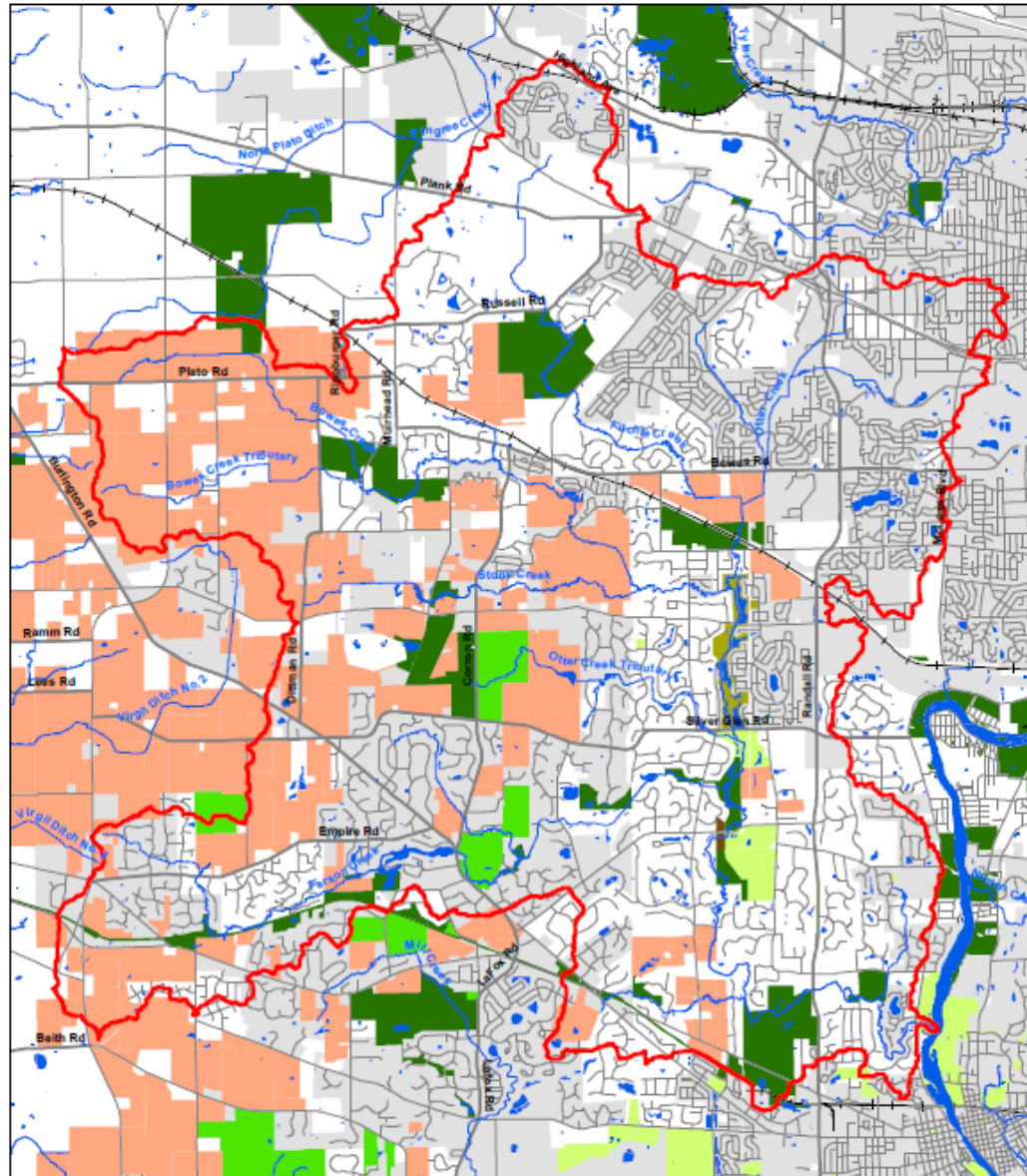
Lake Michigan
Out of Region



Data Sources: Watershed Boundaries: Illinois State Survey; Land Use: CMAP; Roads: NAVTEQ and Metra Rail Lines: RTA; U.S. Major Highways: SHESRI; Sampling Locations and Stream Segments: [unintelligible]




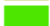
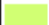




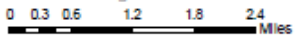
Chicago Metropolitan Agency for Planning



**Open Space & Potential Future Development
in the Ferson-Otter Creek Watershed**

Legend

- | | |
|---|---|
|  Ferson - Otter Watershed Boundary |  Kane Co Forest Preserve |
|  Other Public Land |  STC Park Dist. Open Space |
|  Areas of Future Development |  Campton Twp Open Space |
|  Municipalities | |



Prepared By:
TROTTER
CONSULTING ENGINEERS

Other data we have...

- INAI
 - ADID-open waters and streams
 - Population forecasts
 - Water Supply data
 - IDNR Stream Ratings
 - Green Infrastructure-Campton Hills
 - Biological Survey-1998
 - SSURGO Soils
 - National Wetland Inventory
 - IEPA-303 (d) and 305 (b) report
-

Other data we are looking for...

- Septic Tanks (Kane County Health Dept.)
 - More info on the sampling locations (IDNR)
 - Existing land management practices(munis/Kane)
 - Fish and Wildlife data (IDNR)
 - Flow data-cubic ft./second (USGS/IDNR/OWR)
 - Basin Surveys (IEPA/IDNR)
 - Wellhead protection areas
 - Impervious cover data
 - ???
-

Thoughts and Questions

